

E-VisionTempo

Multifunctional Timer



User and Set-Up
Manual

ELOS E-VISION - Tempo

Aquarium' Lights Controller.

1. Easy to program
2. Manages both, led lamps as well as discharge lamps (HQI)
3. Four separate Channel
4. Adapts to the standards of the most common Led-Lights settings
5. Professional construction
6. Widely Expandable
7. Remotely Controllable

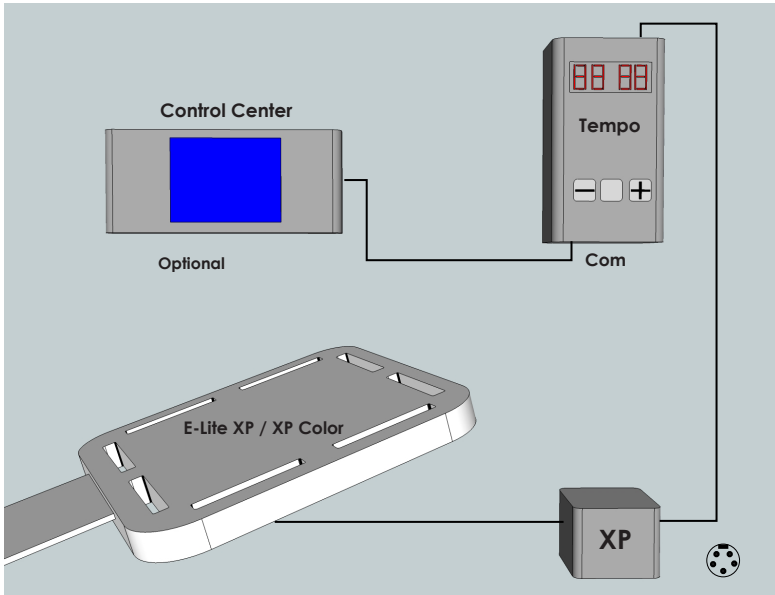
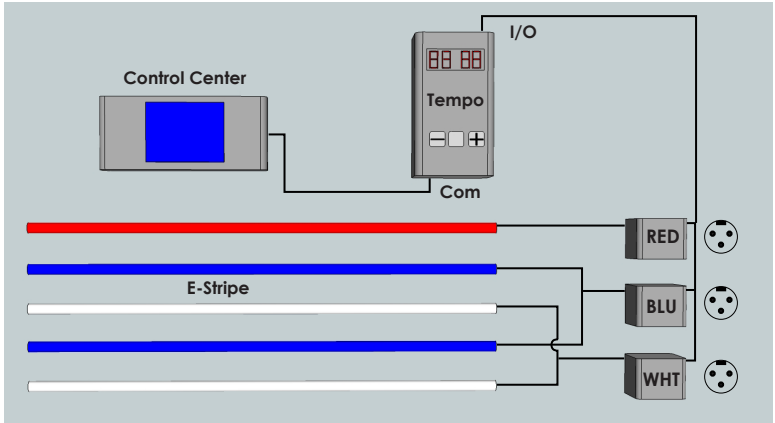
Thank you for purchasing our lights controller. **E-Vision Tempo** is a versatile product that outperforms every timer up to now available on the market. The use of a modern and powerful microprocessor has permitted us to create a variety of similar units that all have a simple foundation, but which can be built up into a very sophisticated aquarium controller for unmatched operational reliability (temperature, pH, conductivity, redox, etc.. etc.) easily connectable to your computer via USB port, Ethernet network or via WEB and GPRS modem (SMS remote controller). Although **ElosTempo** have simple onboard programming capability, the remote Touch Screen Display (Optional) allows for more sophisticated programming through an easily navigable graphical user interface transforming it into a multi-function timer that can control dosing pumps, feeders, night lights, etc.. etc. An open system, full of accessories, which will become the control center of your aquarium ... and in your home.



SAFETY RULES



- a.** Before connecting **E-VISION Tempo** and its accessories, find a safe and easily reachable location. The interior of the cabinet of your aquarium is **NOT** a safe place. To reduce the risk of electric shock it is important to avoid getting it wet or exposing it to water spray. In this regard, thanks to its industrial construction, it can easily be mounted on a DIN rail inside any sealed commercial racks as well as in our dedicated box (optional).
- b.** Always make sure that no water enters the unit flowing through the cables. To do this create a proper drip loop with the cable (Photo 1). Make sure that the connecting cables extend well below the controller and the power supply to prevent water flowing down the cables and into the openings of the power supply and controller.
- c.** Avoid dropping the control module and power supply in water. If this occurs, immediately disconnect the unit from the wall socket and contact the Elos retailer or Elos service center for a complete overhaul.
- d.** Avoid use in hazardous conditions. Never use electrical equipment with wet hands or feet that are immersed in water: **SHOCK HAZARD.**



Once the controller is located in a dry place, fixed by DIN rail (optional) or inside its dedicated housing (optional) proceed as indicated below:

connect:

1.1 PROCEDURE FOR ELOS LED LAMPS

- a. one end of the cable provided (telephone type 6-pin) to the I/O port placed at the top right of the module **E-VISION Tempo** (see photo 1)
- b. the free end of the cable (6-pin telephone type) to one of two ports placed on the **LED DIMMER** unit (see photo 2)
- c. the plug * exiting from the Power Supply (normally supplied with your ELOS Led lamp or purchased separately) to the male socket located on **LED DIMMER** unit
- d. the plug* exiting from your lamp, to the female socket located on the LED DIMMER unit
* (Top Aqua and ELITE: 3-pin plug, ELITE XP: 5-pin plug)
- e. **ONLY NOW** you can connect the power supply (normally supplied with your ELOS Led lamp or purchased separately) to the Main Power.



Do not disconnect or connect the individual components without first disconnecting the Main Power Supply. **YOUR SYSTEM CAN BE PERMANENTLY DAMAGED!**

The RED display should switch ON. Otherwise please review all the connections to verify that the electrical contacts are properly working.

1.2 PROCEDURE FOR DISCHARGE LAMPS or any 110/220 volts loads

- a. one end of the provided cable (telephone type 6-pin) to the I/O port placed at the top right of the **E-VISION Tempo** (see photo 1)
- b. the free end of the cable (6-pin telephone type) to one of two ports placed on the **LED DIMMER** unit (see photo 2)
- c. another 6-pin cable, similar to the one before, to the still free port (I/O 6-pin) placed on the **LED DIMMER** unit
- d. the free end of the cable, to one of the 6-pins I/O ports located on the **POWER PLUG** unit (see photo 3)
- e. the plug* coming from the power supply (normally supplied with your LED lamp or to be purchased separately) to the "male socket" located on the **LED DIMMER**

f. the main power plug of your 110/220 volts lamp to the 110/220 volt socket located on the **POWER PLUG**. You can connect up to 4 POWER PLUG in series and assign to each of them a different address by means of the dip switches placed on the bottom of the **POWER PLUG**. (see Power Plug Instructions)

g. if you even have a LED light, you will connect the plug* exiting from your lamp, to the female socket located on the **LED DIMMER** unit

* (Aqua Top 3 poles, 3 poles ELITE, ELITE XP 5-pin)



e. **ONLY NOW** you can connect the power supply (normally supplied with your ELOS Led lamp or purchased separately) to the Main Power. Do not disconnect or connect the individual components without first disconnecting the Main Power Supply. **YOUR SYSTEM CAN BE PERMANENTLY DAMAGED!**

The RED display should switch ON. Otherwise please review all the connections to verify that the electrical contacts are properly working.

You are now ready for programming.

PROGRAMMING

2

E-VISION time can be programmed directly through the buttons placed on the unit itself or through the Touch Screen unit (optional). This manual provides instructions for direct programming. Refer to the owner of the Touch Screen for the related instructions.

2.1 SETTING CURRENT TIME

- a. press the center button for 5 SECONDS, the hour digits will begin to blink
- b. press the left button to decrease or to the right to increase the current hour.
- c. press once again the center button to proceed to the setup of to the minutes. Follow the same procedure as indicated in step b.

Note: the Timer will automatically exit from the Setting screen after a pre-defined set time or when you press the center button.

2.2 PARAMETERS SETUP

a. press the center button and hold it until you step into PARAMETER mode where you can adjust the following parameters:

HDY: start time (Hour) of the lamps (1-24h)

MDY: start minutes of the lamps (1-59')

Len: total length of the day in hours (usually set to 9-11 hours)

SLO: ramp time. Define the sunrise and sunset duration (5-30 ')

Mod: night mode

Foto 1



Foto 2



Foto 3

00: light off
01: white light on overnight
02: blue light on overnight

NIG: intensity of light at night (0-30%)

WHI: White channel intensity (0-100% HQI + *) - Channel 1 HQI

BLUE: blue channel intensity (0-100% HQI + *) - Channel 2 HQI

Red: red channel intensity (0-100% HQI + *) - Channel 3 HQI

GRE: intensity of green channel (0-100 HQI +% *) - Channel 4 HQI

out: dimming mode

-G-: standard

-N- : inverted

Id: identifier timer (00-07)

Note: Set the mode to HQI in case the channel is used to control the POWER PLUG module to turn on/off utilities at 110/220 volts. Set accordingly to ON the DIP switch on the POWER PLUG unit, (WHITE=1 / BLUE = 2 / RED=3 / GREEN = 4)

b. the adjustment of each parameter can be done by pressing the left button to decrease or the right to increase the value

c. press the center button again to advance to the next parameter

Note: the Timer will automatically exit from the Setting screen after a pre-defined set time or when you press the center button.

MANUAL & DEMO MODES

3

- Once out from the SetUp menu, lights can be manually switched on/off by cyclically pressing the "+" button. The display will show the ON-OFF message.

NOTE: on/off will happens gradually!

- Press the "-" and the Timer will start a "DEMO" cycle during which the lights will simulate the solar cycle, shortening the time. The display will show dEN. To exit the DEMO mode, just press the button "-"once .



IMPORTANT

DO NOT DISCONNECT / CONNECT FOR ANY REASON THE VARIOUS FORMS WITHOUT DISCONNECT THE MAIN POWER AS YOU CAN PERMANENTLY DAMAGE THE TIMER OR ITS COMPONENTS.

WARRANTY

The device is covered by a two-year warranty against breakdown due to manufacturing defects. Not covered damage caused by improper use.

Do not open the unit to avoid the expiration of the warranty.

3.1 FIRMWARE UPDATE

The new firmware will be available for download on the website www.elseurope.com

You will need to download the following files:

- 1) E-Link Interface Driver (CDM 2:02:04)
- 2) Firmware (ElosTimer.bin)
- 3) Software program (Setup.exe DisplayManager.msi +)

Once downloaded the files, proceed as indicated below:

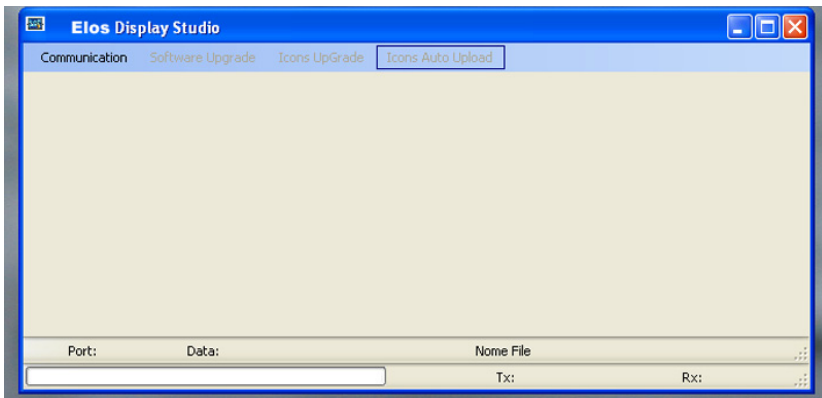
STEP 1: Install the driver and the program

- a. connect the E-Link interface to your computer which will prompt you to select the Driver (CDM 2:02:04). Install the driver following the directions on the screen.
- b. Install the "Software Programming" by running the setup.exe file and follow the directions on the screen.

You are now able to proceed with the upgrade by following the steps listed below:

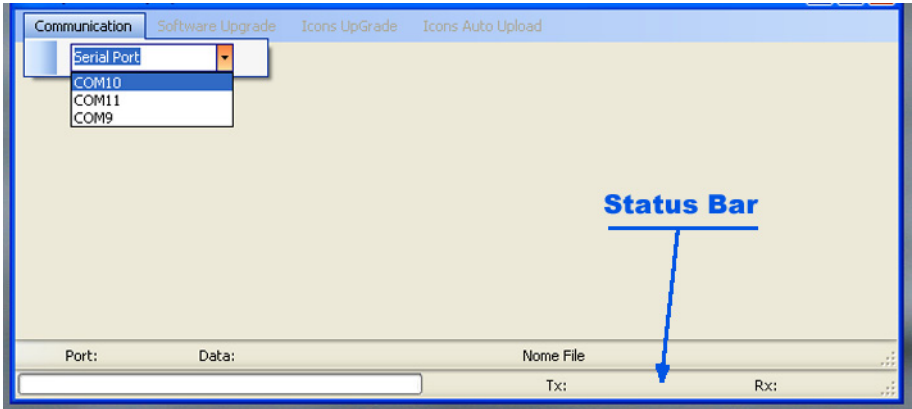
STEP 2: Firmware Update

- a. remove the power supply to the timer and the components connected to it. Once this is done remove any connections/cable from the timer.
- b. connect to one of the COM ports placed on the bottom of the timer, the programming interface of E-Link (previously connected to your PC) using the included cable (phone type four-pole)
- c. Only then you can connect the power to the programming interface
- e. On your PC run the DISPLAY STUDIO program
- f. press on the "Communication" menù and in the dropdown menu select the




correct communications port.

- g.** Press on the "Software Upgrade" menu and in the dropdown menu choose the firmware you just downloaded
- h.** the upgrade will start automatically. To confirm this, you will notice that the



counter in the status bar will advance.

- i.** Once you have fully uploaded the new firmware, disconnect the power supply and only at this point disconnect the timer from the USB port and reconnect it to your aquarium.



IMPORTANT

DO NOT DISCONNECT / CONNECT FOR ANY REASON THE VARIOUS FORMS WITHOUT DISCONNECT THE MAIN POWER AS YOU CAN PERMANENTLY DAMAGE THE TIMER OR ITS COMPONENTS.

TROUBLESHOOTING AND NOTES:

- 1)** when your lights are functioning abnormally, make sure you have correctly set the "dimming mode". If the problem persists, make sure the timer is not running the ramp (sunrise or sunset) or is not in twilight mode, (all lights are switched off).
- 2)** Not all lamps react equally to the low voltage level: adapt to your needs the intensity of light during the night (moonlight) by testing the most suitable level (%)
- 3)** twilight mode: between day and night lights are turned off for a while, until the appearance of the night/day mode.
- 4)** when connected to the Touch Screen, the keyboard on Timer will be unusable and the display will shows the REM (Remote) word.

E-Vision Accessories

